



Product brochure

Rainwater management
systems

www.galeco.pl





MASTER GUTTER SYSTEMS

BEYOND A SHADOW OF A DOUBT



Wilfredo León

Wilfredo León

www.galeco.pl

TABLE OF CONTENTS

SQUARE GUTTER SYSTEMS

Galeco PVC ²	4
Galeco STAL ²	8
Galeco HIDDEN GUTTER	12
Heating cable system	16

HALF-ROUND GUTTER SYSTEMS

Galeco PVC	18
Galeco STAL	20
Galeco LUXOCYNK	22

FLAT ROOFS

Roof outlets - sets - adapters	24
--------------------------------	----

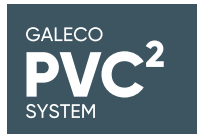
PVC SOFFIT

Galeco NOVA	30
-------------	----





**Galeco
PVC²**



Galeco PVC² is the next step into the future and an innovative approach to the gutter system.

By using selected PVC raw material to create a square gutter profile. The modern and stylish shape makes the new square gutter a perfect match for the latest trends in construction and architectural designs, as well the customers' aesthetic needs.

System advantages:



Square profile of the gutter and the downspout

Shape perfectly adopted to modern building designs. Additionally, the wide and deep profile of the gutter ensures higher flow capacity of the system.



UV resistant material.

Highest possible UV resistance due to carefully selected materials.



Increased gloss of the gutters

The high gloss of the system obtained thanks to the process of co-extrusion will let you enjoy its perfect appearance for many years.



Increased leakproofness of the system

By using a specially designed, innovative gutter sealing component.



Support for architects - CAD/BIM databases

Specially prepared CAD drawings will allow architects and designers to accommodate the system into the building design.

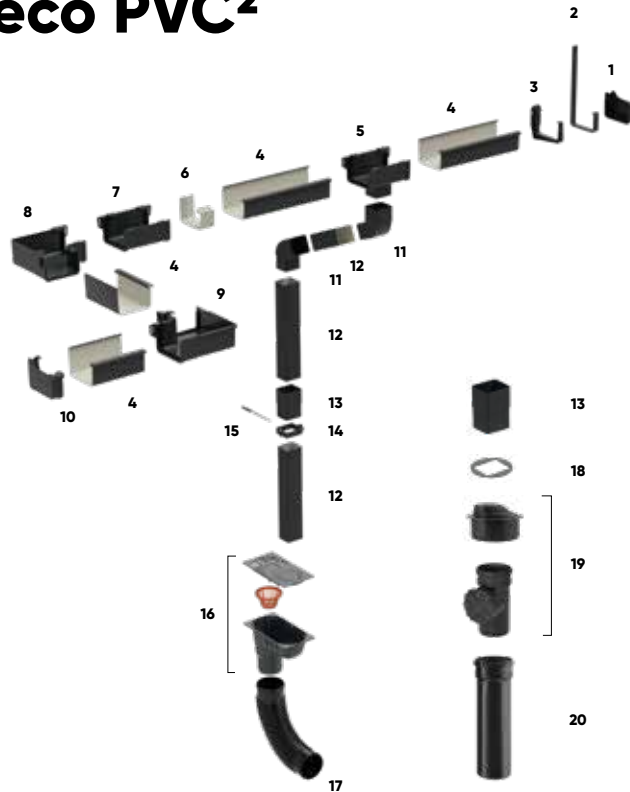


10 year warranty

against physical damage.





System assembly Galeco PVC²



List of components

- | | |
|----|---|
| 1 | Right endcap |
| 2 | Metal rafter bracket |
| 3 | Face bracket PVC |
| 4 | Gutter |
| 5 | Outlet |
| 6 | Sealing insert |
| 7 | Gutter connector |
| 8 | Internal corner 90° |
| 9 | External corner 90° |
| 10 | Left endcap |
| 11 | Elbow 67° |
| 12 | Downspout |
| 13 | Socket |
| 14 | Downspout clamp |
| 15 | Long-sleeve stud anchor |
| 16 | Universal settling tank (with basket and flaps) |
| 17 | Elastic elbow |
| 18 | Flap for 70x80 downspout |
| 19 | Vertical cleanout tee 110 with 80-110 adapter (set) |
| 20 | Pipe 110 for the cleanout tee 0.5 mm |

Capacity table

Downspout arrangement	Gutter type/ Downspout dimension	
	135/70x80	
	90 m ²	
	180 m ²	

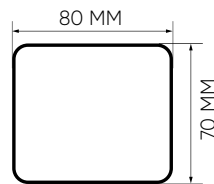
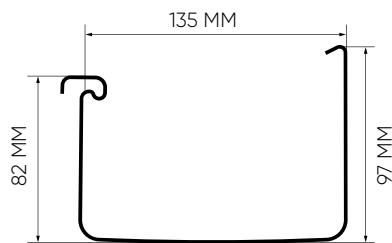
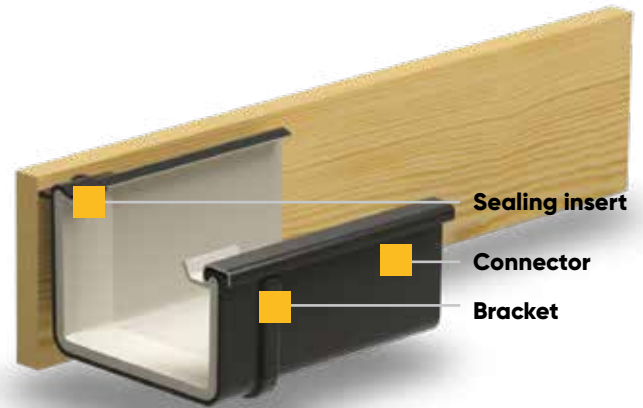
Colours

		135/70x80
~ RAL 7021	Y Graphite	
~ RAL 9005	U Black	

Sealing insert

An innovative component that presses the gutter to the fitting where the main seal is located.

Corners of the square section gutter are prone to leaks, but sealing inserts make the gutter and the main seal perfectly adhere to each other, ensuring 100% leakproofness of all system joints.



Size information

Galeco PVC² Gutter System 135/70x80 is designed for detached houses, larger residential buildings and small industrial objects. The rigid square section makes the gutter much more efficient than round section 135 mm gutters. The rectangle downspout section was designed for modern architecture solutions, perfectly matching the building body appearance.





**Galeco
STAL²**



Galeco STAL² is a gutter system designed to provide modern and aesthetic solutions perfectly harmonising with the shape of the building.

Using the square steel gutter of the Galeco STAL² Gutter System enables a soffit gutter cover to be installed, which is snapped into the lower locks of the butt brackets. The solution allows the face of the gutter to be hidden and the bottom of the seals to be finished with a decorative Galeco NOVA soffit, making the eaves nice and smooth.

System advantages:



Aesthetics of workmanship

The geometric shape of the gutter/downspout and use of the decorative soffit gives the building body a very modern appearance.



Soffit gutter cover

The system allows for easy fitting of the soffit gutter cover that gives the impression of smooth eaves.



Square section of the gutter and the downspout

The shape optimally matched to the building façade additionally ensures greater system efficiency.



Support for architects - CAD/BIM databases

Specially prepared CAD drawings will allow architects and designers to accommodate the system into the building design.



Gutters and downspouts protected with a plastic film

The film protect them against scratches during transport.

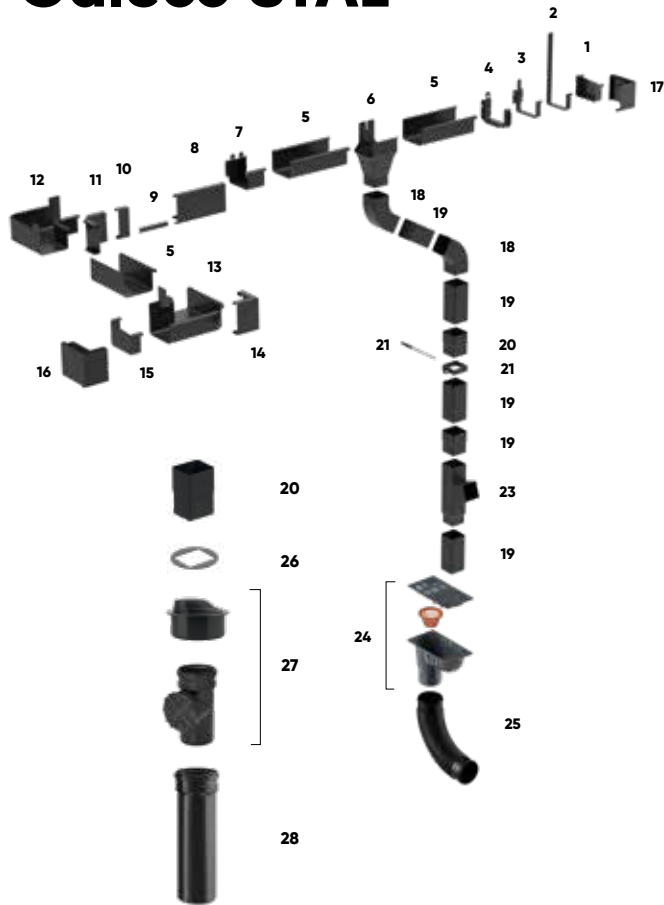


35 year warranty

granted for perforation corrosion.





System assembly Galeco STAL²



List of components

1	Right endcap	15	Left endcap
2	Rafter metal bracket	16	Left endcap of the soffit gutter cover
3	Butt metal bracket	17	Right endcap of the soffit gutter cover
4	Soffit gutter cover butt metal bracket	18	Elbow 72°
5	Gutter	19	Downspout section
6	Suspended outlet	20	Socket
7	Expansion butt connector	21	Downspout clamp
8	Soffit gutter cover	22	Long sleeve stud anchor
9	Internal connector of the cover	23	Belled T-pipe 72°
10	External connector of the cover	24	Universal settling tank (with basket and flaps)
11	Internal corner of the cover	25	Elastic elbow
12	Glued internal corner 90°	26	Flap for 80x80 downspout
13	Glued external corner 90°	27	Vertical cleanout tee 110 with 80-110 adapter (set)
14	External corner of the soffit gutter cover	28	Pipe 110 for the cleanout tee 0,5 mm

Capacity table

Downspout arrangement	Gutter type/ Downspout dimension	
		125/80x80
		90 m ²
		180 m ²

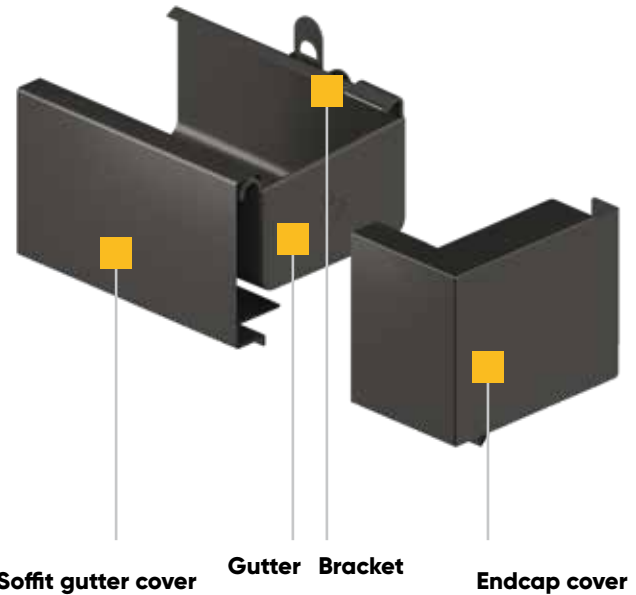
Colours

		125/80x80
~ RAL 7015	A Graphite	
~ RAL 9005	B Black	
~ RAL 9007	G Metallic anthracite	

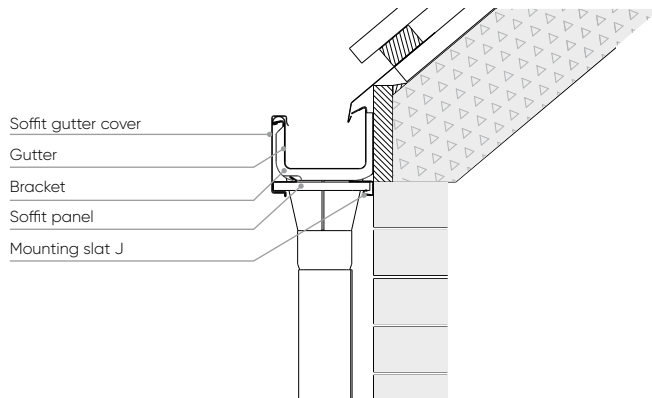
Soffit gutter cover

The steel square gutter gives a house with eaves a modern and aesthetic look.

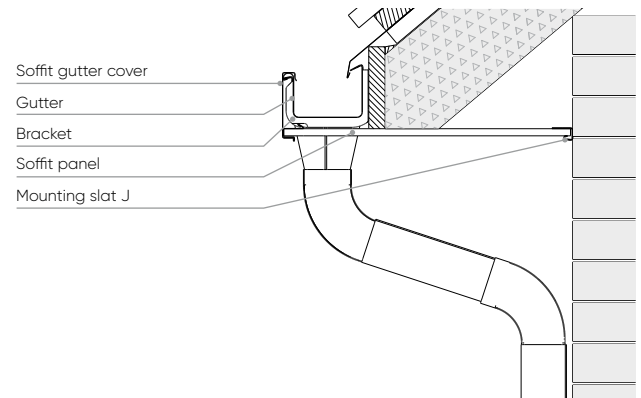
This is possible thanks to the soffit gutter cover, snapped to the face brackets, hiding the front of the gutter and giving the effect of a smooth eaves finish. Dedicated metal LH and RH endcaps covers are available. They cover the plastic endcaps of the gutter, so no further flashing works are required.

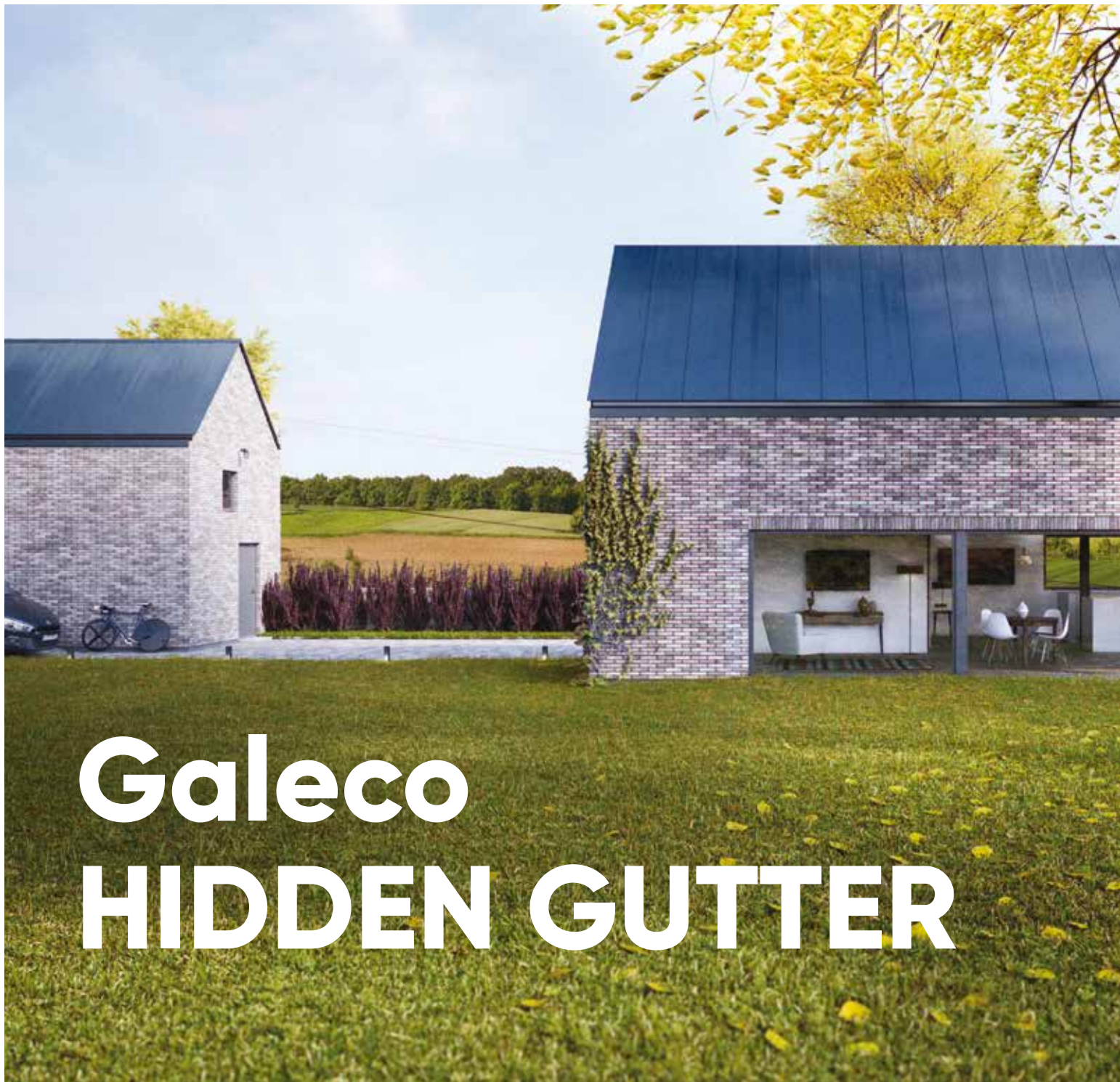


Installation cross-section on a roof without eaves



Installation cross-section on a roof with eaves





Galeco HIDDEN GUTTER



GALECO
**HIDDEN
GUTTER
SYSTEM**

Galeco HIDDEN GUTTER system is an innovative gutter system dedicated for installation inside the insulation of buildings without traditional eaves.

The sophisticated design allows the Galeco HIDDEN Gutter System to fit perfectly into the shape of the building, making it aesthetic and modern-looking. By using the hidden gutter and downspouts solution, even the most innovative building designs can be executed without marring the façade with traditional downspouts.

System advantages:



Gutter cover

The system allows for easy fitting of the soffit gutter cover that gives the impression of smooth eaves.



Increased leakproofness of the system

If properly installed, the system is entirely safe and tight, without any risk of leakage into insulation.



Square section of the gutter and the downspouts

Optimally suited for mounting inside the façade, providing even greater efficiency.



Support for architects - CAD/BIM databases

Specially prepared CAD drawings will allow architects and designers to accommodate the system into the building design.



Aesthetics of workmanship

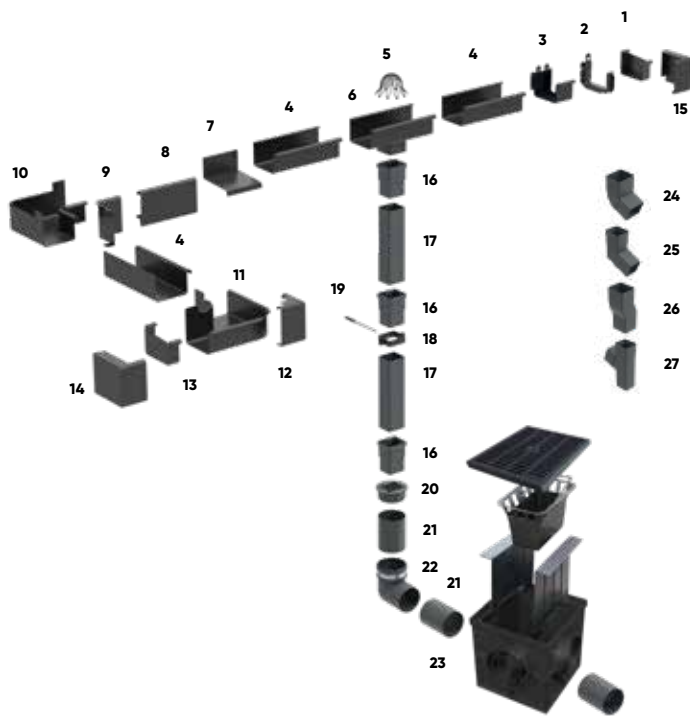
The geometric shape of the gutter/downspout and the gutter covers gives the building body a very modern appearance.



10 years warranty

against perforation corrosion, mechanical durability and leakproofness of the system.

System assembly Galeco HIDDEN GUTTER



List of components

1	Right endcap	15	Right endcap of the face gutter cover
2	Cover butt metal bracket	16	Socket with gasket
3	Expansion butt connector	17	Downspout
4	Gutter	18	Downspout clamp
5	Outlet leaf guard	19	Long sleeve stud anchor
6	Outlet	20	Adapter
7	Verge trim	21	Drain pipe
8	Face gutter cover	22	Drain pipe elbow 88°
9	Internal corner of the cover	23	Gully (with a superstructure/grate, aeparators and basket)
10	Glued internal corner 90°	24	Elbow
11	Glued external corner 90°	25	Non-standard side elbow
12	External corner of the soffit gutter cover	26	Offset pipe
13	Left endcap	27	Non-standard side T-pipe
14	Left endcap of the face gutter cover		

Colours of the gutters

~ RAL 7015	A Graphite	■
~ RAL 9005	B Black	■

Available cover colours

~ RAL 7015	A Graphite	■
~ RAL 7016	Y Graphite matt	■
~ RAL 9005	B Black	■
~ RAL 9005	U Black matt	■
~ RAL 9007	G Metallic anthracite	■

Capacity table

Downspout arrangement



Gutter type/ Downspout dimension

125/70x80

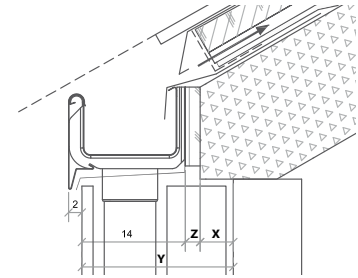
90 m²

180 m²

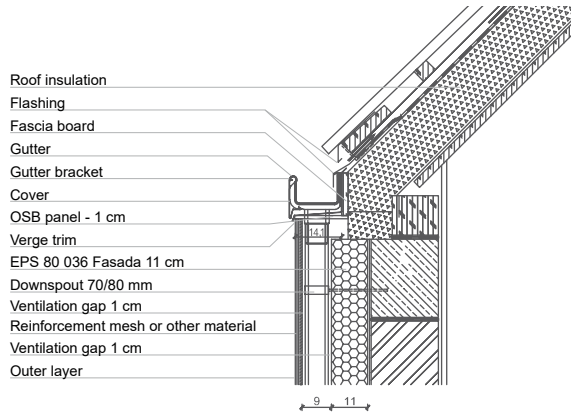
Rafter protrusion formula

$$X = Y - 14 - Z$$

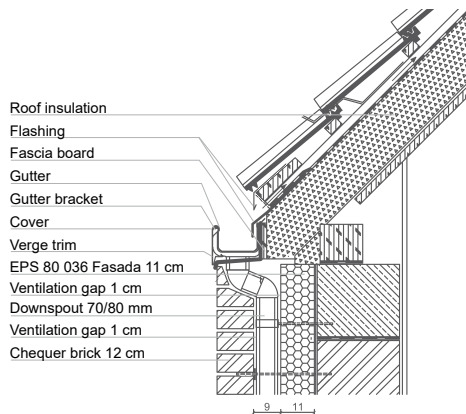
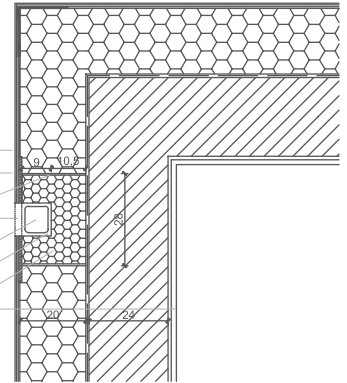
- X [cm] - distance of the rafter protrusion inside the cavity
- Y [cm] - insulation thickness + façade finish
- Z [cm] - fascia board thickness
- 16 [cm] - width from the cover face to the rear surface of the bracket



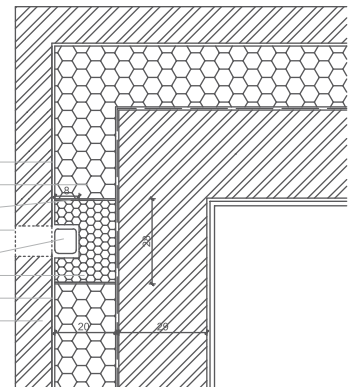
Cross-section of the joint between the gutter and the downspout / horizontal view / plastered façade



- Thermal insulation 20 cm
- Reinforcement mesh or other material
- Installation foam
- Air grate min. 1 cm above the ground level
- Downspout 70/80 mm
- Ventilation gap 1 cm
- Thermal insulation 20 cm
- Outer layer



- Ventilation gap
- Thermal insulation 20 cm
- Installation foam
- Air grate min. 1 cm above the ground level
- Downspout 70/80 mm
- Thermal insulation 20 cm
- Ventilation gap
- Curtain wall from chequer brick 12 cm



SelfTec® PRO heating cable system

Galeco gutters equipped with the heating cable system will prevent accumulation of ice and snow, stopping water seepage on the façade and ensure your peace of mind and a smile for many years.

System advantages:



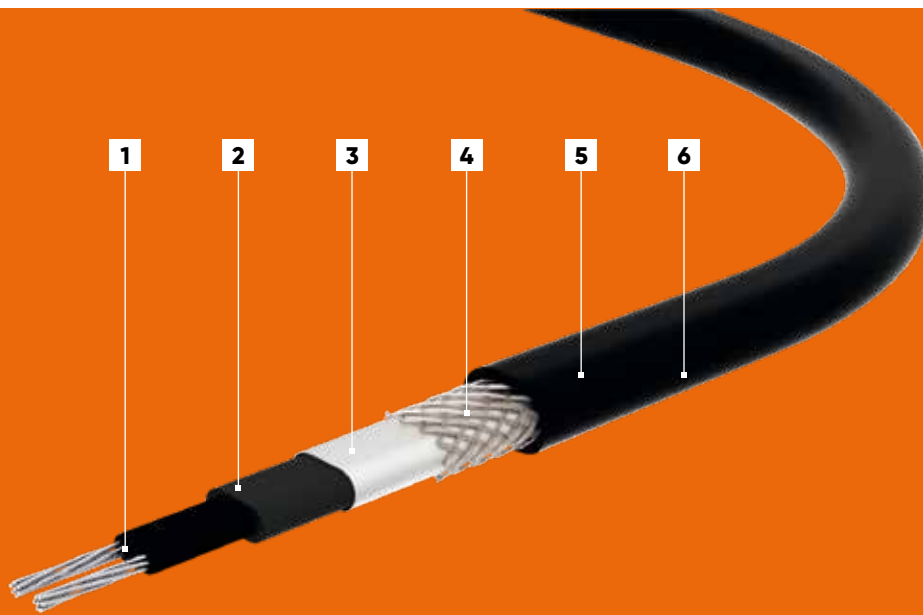
Economical operation

A controller and sensors switch the system off automatically depending on the weather conditions.



Versatility

The heating cables can be laid in all types of gutter, no matter what shape or material they are made of.



SelfTec[®] heating cable cross section

- 1 Conductor made of galvanised copper wires

- 2 Self-regulating conductive polymer

- 3 Modified polyolefine insulation

- 4 Screen – plastic sheet AL/PET

- 5 Screen – braid made of galvanised copper wires

- 6 External coating made of UV resistant, halogen-free plastic

Installing the cables in half-round gutters

The heating cables can be laid in all types of gutter. The cables are installed using dedicated clips for half-round gutters. The clip spacing should not be greater than 30 cm. Normally, two cables are laid in the gutter, but in gutters and downspouts of diameter 12 cm or smaller or in mild winter areas one cable is normally sufficient.



Mounting of the heating cables in the half-round gutters



Mounting of the heating cables in the square gutters

Installing the heating cables in square gutters

The heating cables are designed particularly for the square gutters used in the Galeco HIDDEN GUTTER system that is equipped with square downspouts, hidden in the façade.

The gutter heating solution significantly decreases the risk of water freezing in the critical areas of the downspout line, and its fitting is one of the warranty conditions for this type of the gutter system.



Supporting rope for multi-storey buildings



Galeco PVC



The new quality gutter system, manufactured according to state-of-the-art co-extrusion technology.

A specially developed PVC material has increased resistance to UV radiation and ensures colour durability in changing weather conditions, as well as high and long-lasting gloss.



Innovative shape of the gutter

Prevents water overflow, even during heavy rainfall.



UV resistant material.

The high gloss of the surface achieved in the process of co-extrusion allows users to enjoy the perfect look of the system components for years to come.



Tensile strength of the system

Due to the bright internal surface of the long components, the system heats up even 15% less.



The first adjustable corner on the market

significantly reduces the time and cost of the gutter system installation.



Specially profiled gutter bracket

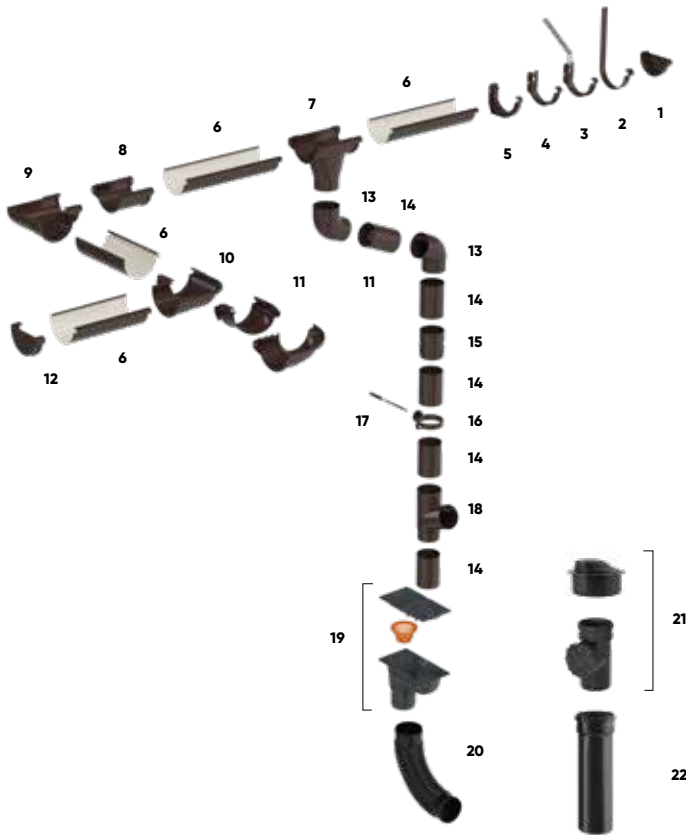
with high bearing strength.



10 year warranty

against physical damage.

System assembly Galeco PVC



List of components

- | | | | |
|----|---------------------------------------|----|---|
| 1 | Right endcap | 13 | Elbow 67° |
| 2 | Rafter metal bracket | 14 | Downspout section |
| 3 | Metal butt bracket with support | 15 | Socket |
| 4 | Metal butt bracket | 16 | Downspout clamp |
| 5 | PVC butt bracket | 17 | Long sleeve stud anchor |
| 6 | Gutter | 18 | T-pipe |
| 7 | Seal-free outlet | 19 | Universal settling tank (with a basket and flaps) |
| 8 | Connector | 20 | Elastic elbow |
| 9 | Internal corner 90° | 21 | Vertical cleanout tee 110 with 80-110 adapter (set) |
| 10 | External corner 90° | 22 | Pipe 110 for the cleanout tee 0.5 mm |
| 11 | External corner with adjustable angle | | |
| 12 | Left endcap | | |

Capacity table

Downspout arrangement



Downspout arrangement	Gutter type/ Downspout dimension				
	90/50	110/80	130/80	130/100	150/100
	36 m²	58 m²	99 m²	99 m²	148 m²
	73 m²	116 m²	198 m²	198 m²	296 m²

Colours

		90/50	110/80	130/80	130/100	150/100
~ RAL 8019	V Dark brown	■	■	■	■	■
~ RAL 9010	W White		□	□	□	
~ RAL 9005	B Black	■	■	■	■	
~ RAL 7038	G Light grey					■
~ RAL 7021	A Graphite	■	■	■	■	■
~ RAL 8017	K Chocolate brown			■	■	



When you build a house, you think of your children, but also your grandchildren.

This is why we have developed a robust and long-lasting solution to assure comfortable use and a smile on your face for many years. Galeco STAL gutter system guarantees long term satisfaction.

System advantages:



Innovative shape of the gutter

Prevents water overflow, even during heavy rainfall.



Gutters and downspouts protected with a plastic film

The film protects them against scratches during transport.



High durability of metal sheets

thanks to the application of 4 protective layers, providing protection against weather conditions.



Deep gutter profile

A steel gutter deeper than gutters of other systems available on the market, which guarantees higher effectiveness of water draining.



The first adjustable corner on the market

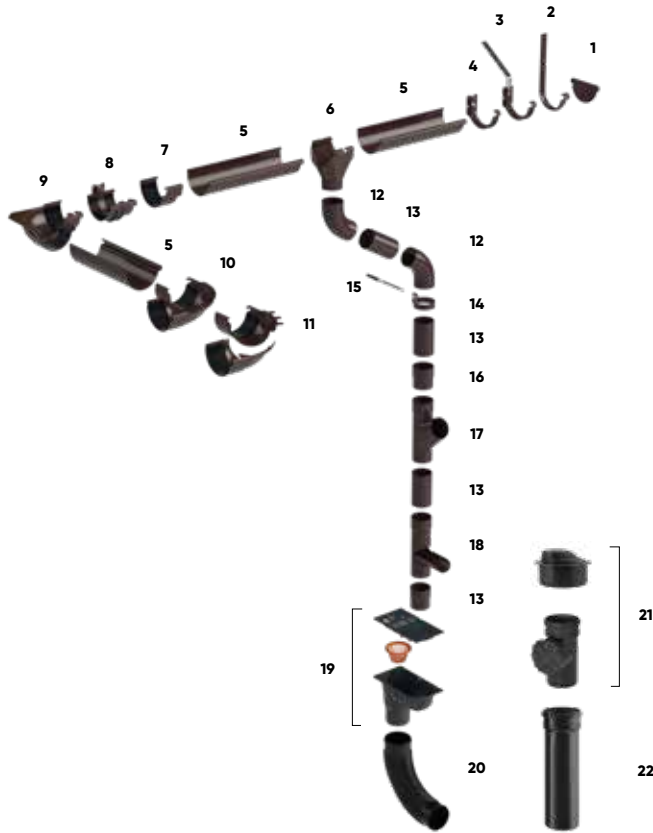
significantly reduces the time and cost of the gutter system installation.



35 year warranty

against perforation.

System assembly Galeco STAL



List of components

- | | | | |
|----|--|----|---|
| 1 | Universal endcap | 13 | Downspout section |
| 2 | Rafter bracket/reinforced | 14 | Downspout clamp |
| 3 | Butt bracket with support | 15 | Long sleeve stud anchor |
| 4 | Butt bracket | 16 | Socket |
| 5 | Gutter | 17 | T-pipe |
| 6 | Outlet | 18 | Water catcher |
| 7 | Clamp connector | 19 | Universal settling tank (with a basket and flaps) |
| 8 | Gutter-bracket connector | 20 | Elastic elbow |
| 9 | Sealed internal corner 90° | 21 | Vertical cleanout tee 110 with 80-110 adapter (set) |
| 10 | Sealed external corner 90° | 22 | Pipe 110 for the cleanout tee 0.5 mm |
| 11 | Adjustable outer corner with angle range of 100-165° | | |
| 12 | Elbow 60° | | |

Colours

120/90 135/90 135/100 150/100 150/120

STEEL

~ RAL 7015	A Graphite	■	■	■	■	■
~ RAL 8004	D Brick-red		■	■		
~ RAL 8019	V Dark brown	■	■	■	■	■
~ RAL 8017	E Chocolate brown	■	■	■		
~ RAL 9003	W White		□			
~ RAL 9005	B Black	■	■	■		
~ RAL 3009	R Dark red		■	■		

SEMI-MATT STEEL

~ RAL 7016	Y Graphite	■	■	■		
~ RAL 9005	U Black	■	■	■		
~ RAL 8017	K Chocolate brown	■	■	■		

METALLIC STEEL

~ RAL 8007	H Copper		■			
~ RAL 9007	G Anthracite		■	■		
~ RAL 9006	I Silver		■	■	■	■

Capacity table

Downspout arrangement



Downspout arrangement	Gutter type/ Downspout dimension				
	120/90	135/90	135/100	150/100	150/120
Single downspout	60 m²	110 m²	110 m²	150 m²	150 m²
Two downspouts	120 m²	220 m²	220 m²	300 m²	300 m²



Galeco LUXOCYNK

GALECO
LUX
OCYNK
SYSTEM

Galeco LUXOCYNK is a new gutter system introduced to the market by Galeco.

The new material is the most economical choice in Galeco's offer and at the same time guarantees high quality.

System advantages:



Innovative shape of the gutter

Water overflow prevention, even during heavy rainfall.



Gutters and downspouts protected with a plastic film

The film protects them against scratches during transport.



Deep gutter profile

A steel gutter that is deeper than gutters of other systems available on the market, which guarantees higher effectiveness of water draining.



Sealed connections

thanks to sealed corners made of coated sheet metal.



The first universal corner on the market

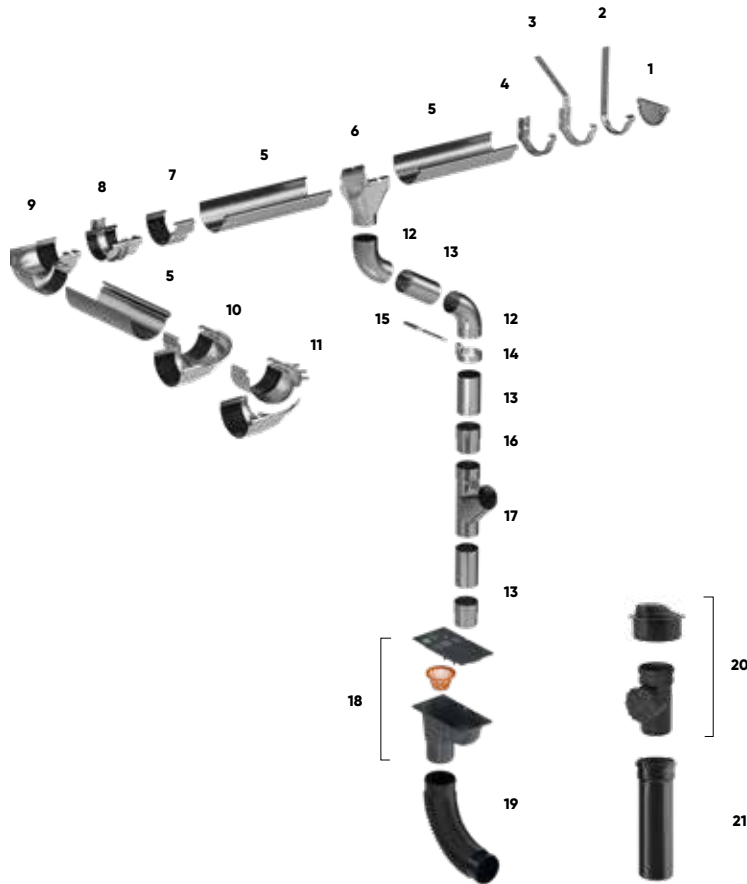
Adjustable, significantly reducing time and cost of the gutter system installation.



10 year warranty

granted for perforation corrosion.

System assembly Galeco LUXOCYNK



List of components

- | | | | |
|----|--|----|---|
| 1 | Universal endcap | 12 | Elbow 60° |
| 2 | Rafter bracket | 13 | Downspout |
| 3 | Butt bracket with support | 14 | Downspout clamp |
| 4 | Face bracket | 15 | Long sleeve stud anchor |
| 5 | Gutter | 16 | Socket |
| 6 | Outlet | 17 | Branch |
| 7 | Clamp connector | 18 | Universal settling tank (with a basket and flaps) |
| 8 | Half round connector | 19 | Elastic elbow |
| 9 | Sealed internal corner 90° | 20 | Vertical cleanout tee 110 with 80-110 adapter (set) |
| 10 | Sealed external corner 90° | 21 | Pipe 110 for the cleanout tee 0.5 mm |
| 11 | Adjustable outer corner with angle range of 100-165° | | |

Capacity table

Downspout arrangement	Gutter type/ Downspout dimension				
	120/90	135/90	135/100	150/100	150/120
	60 m ²	110 m ²	110 m ²	150 m ²	150 m ²
	120 m ²	220 m ²	220 m ²	300 m ²	300 m ²

Colours

		120/90	135/90	135/100	150/100	150/120
~ RAL 9023	L Silver natural					

An aerial photograph of a modern, single-story building with a flat roof. The building features large glass openings that reveal the interior and a deck area. The exterior walls are clad in horizontal wooden slats. The roof is a dark, flat surface. The building is surrounded by lush green trees and landscaping. The text 'Galeco FLAT ROOFS' is overlaid in the bottom left corner.

Galeco FLAT ROOFS



GALECO
**FLAT
ROOFS**
SYSTEM

FLAT ROOFS - drainage

We are the only company on the market offering ready-to-use sets for connection of roof outlets, downspouts and parapet wall passes.

The Galeco system enables the flat roof drainage to be easily connected with the square section downspouts of the Galeco STAL² and Galeco HIDDEN GUTTER systems, forming a coherent whole with the building body.

System advantages:



3 in 1 comprehensiveness

Specially prepared set of 3 components ensuring convenience of purchase - there is no need to buy various components separately.



Innovative solution

The only systemic and comprehensive solution on the market with a parapet wall pass, checked for quality and with the manufacturer's warranty.



Aesthetics and design

The system enables flat roofs to be connected with the most fashionable square section downspouts of the STAL² and Galeco HIDDEN GUTTER systems.



Versatility

Built-in clamping collars enable the system to be fitted on all types of roofing.



High insulation rate

The highest production quality and material selection ensure excellent thermal and UV resistance.

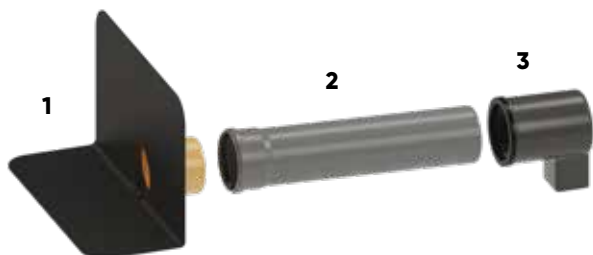


Product availability

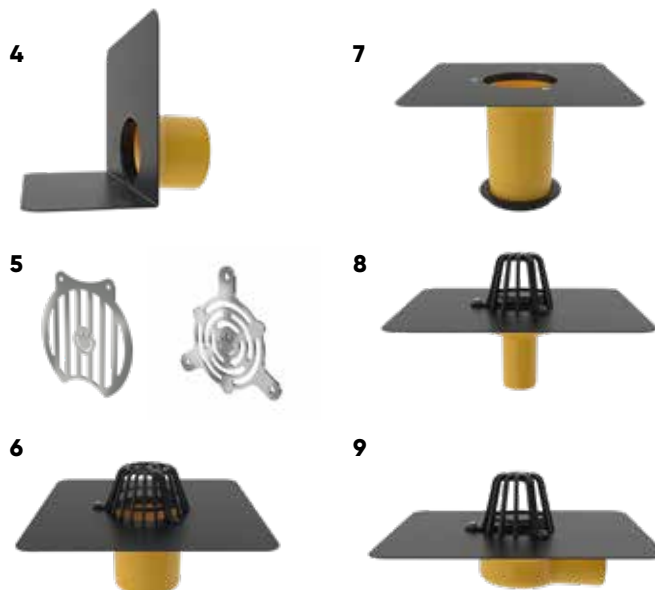
The wide logistics network makes all products easily available in all point of sales supplied by Galeco.

Roof outlets and parapet wall outlets

Galeco drain



1	PARAPET WALL ROOF OUTLET
2	Downspout 110
3	Adapter*
4	Parapet wall roof outlet - safe screw connection
5	Outlet leaf guard - screwed
6	Straight roof outlet with a screwed gravel basket
7	Superstructure - roof outlet, safe screw connection
8	Straight balcony outlet with a screwed gravel basket
9	Elbow balcony outlet with a screwed gravel basket



Capacity table

Name	Traditional roof covered with bituminous roofing paper or roof membrane.	
	Traditional or inverted, green or gravel roof	area m ²
BZO/PVC ² - SET1	100	200
BZO/PVC ² - SET2/SET3	300	600
STAL ² - SET1	100	200
STAL ² - SET2/SET3	300	600

Colours of adapters

~ RAL 7024	A Graphite	■
~ RAL 9005	B Black	■

Performance of the sets is maintained under the following assumptions:

- outlets installed keeping 1 meter horizontal offset to the downspout
- all performance measurements are made with the outlet basket installed, in accordance with PN-EN1253-2
- outlets with steel downspouts are glued on the downspout connections and the downspout/adapter connections
- water downflow factor for a traditional roof is 1.0, whereas for green and gravel roofs this is 0.5,
- standard rainfall assumed for the calculations is 300 l/w x h

* Adapters are available in a configuration compatible with the 80x80 mm steel downspouts installed outside the façade and the 70x80 mm PVC downspouts that can be installed both outside the façade and inside the building insulation layer.

Innovative Adapter

The adapter allows the roof and the parapet outlets to be connected with the square downspouts in a simple and convenient way, ensuring efficient water drainage from flat roofs and terraces, while maintaining the aesthetics of building body simplicity.



Outlet baskets

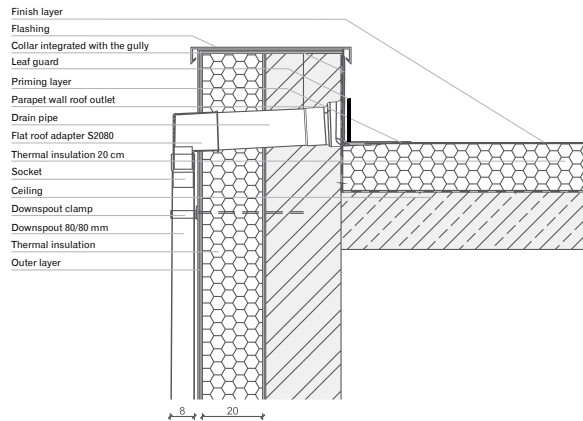
The baskets are emergency drainage components, available in sizes to connect with the round downspouts 90 mm and 100 mm of the Galeco STAL system and with the square downspouts 80x80 mm of the Galeco STAL system².



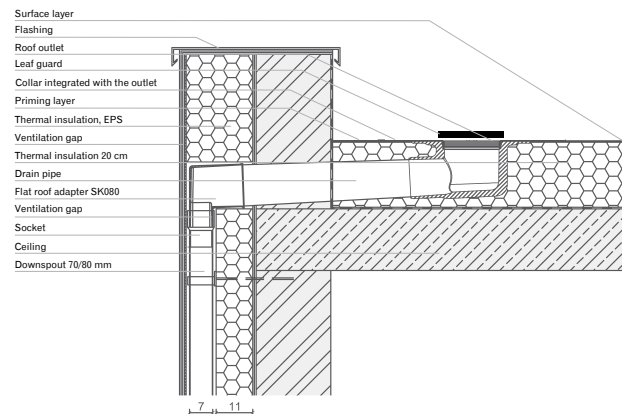




Cross-section of the parapet wall outlet with adapter and steel downspout 80x80 Horizontal view



Cross-section of the roof outlet with adapter and steel downspout 70x80 Horizontal view





Soffit NOVA

PODSUFITKA
NOVA
GALECO

A decorative soffit intended for covering eaves of the roof outside the building.

The Galeco DECOR soffit makes it possible to increase aesthetics of the building in a quick and easy way.

Its low weight also enables installation on lightweight buildings.

System advantages:



Aesthetics of workmanship

Thanks to a comprehensive system of mounting strips, the soffit can be fitted on any type of roof eaves.



No maintenance required

Unlike wood and metal, PVC material requires no maintenance.



Easy assembly

Optimum design of the soffit components allows simple and fast installation.



Weather resistant

By using the highest quality PVC, the soffit retains its physical qualities regardless of weather conditions.



Flexibility and mechanical resistance

during installation due to optimized production processes.



10 year warranty

against physical damage.

System components



Non-perforated soffit



Perforated soffit



External corner



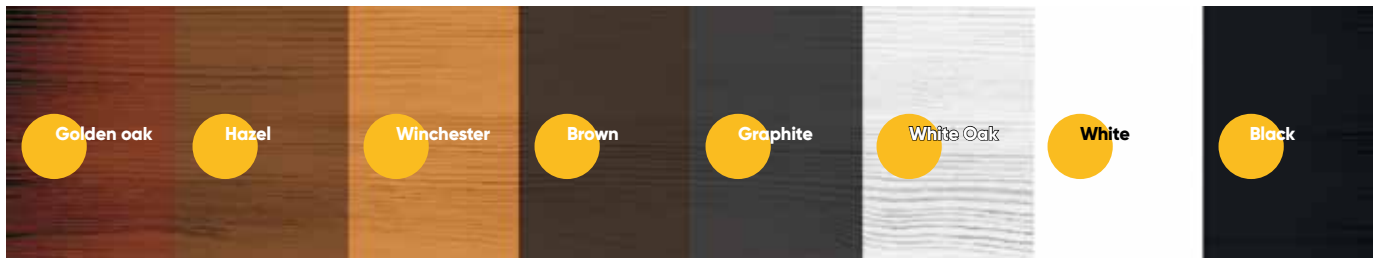
"J" type assembly slat



"H" type assembly slat

Element	Size
Non-perforated soffit	295 x 4000 mm (1 panel = 1.18 m ²)
perforated soffit	295 x 4000 mm (1 panel = 1.18 m ²)
"J" type assembly slat	4000 mm
"H" type assembly slat	4000 mm
external corner	4000 mm

Colours





| Galeco Sp. z o.o.

ul. Uśmiechu 1,
32-083 Balice (near Cracow)

NIP: 679 25 94 371

Phone: +48 12 258 32 00
galeco@galeco.pl

www.galeco.pl

