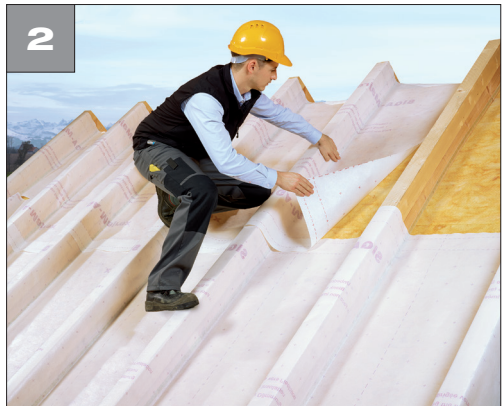




Roof *Airtight on the inside*

Mounting vapour control layer for roof renovation from the outside



- Fit a sheet of insulating material with a solid structure between the rafters (protects vapour control layer against sharp, protruding objects)
- Seal vapour control layer at the lowest part of the rafters using Twinet

- **Apply Majrex** with the unprinted side facing towards you
- Overlap membranes by approx. 10 cm, fix in place with Twinet and additionally with a stapler if required
- See photo 2a for mounting of Majpell 5

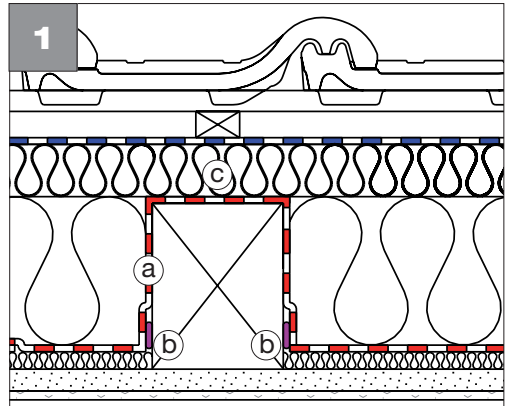
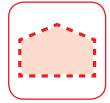


- Seal overlaps and penetrations airtightly using Wigluv 60
- Not suitable for makeshift coverage/ construction coverage

- Fill insulation material in compartments in a tight fit

Roof

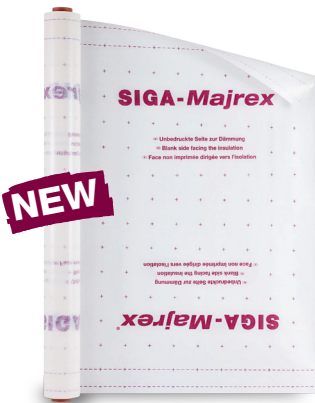
Airtight on the inside



Roof renovation from the outside with Majpell 5:

• Lay Majpell 5 with the smooth side and the writing facing you

- Seal vapour control layer (a) airtight at the bottom of the rafters with Twinet (b)
- Thermal insulation layer (C) above the rafters $R \geq 1.1$
- For locations > 800 above sea level plan with a building physicist



Majrex® P. 108

Majpell® 5 P. 109

Twinet® P. 118