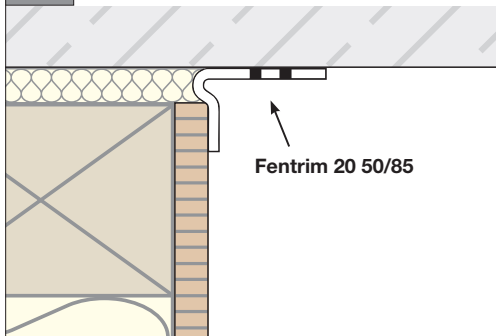


## Wall: Solid construction *Airtight on the inside*

### Joining timber to solid wall construction

#### 1 Schematic diagram



- Joining timber wall construction to **non-plastered** masonry or concrete

#### 2



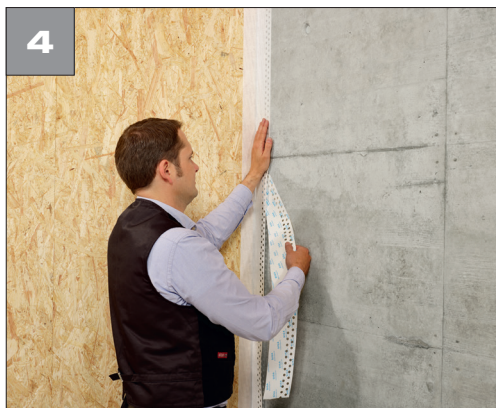
- Affix 50 mm side to wood-based panel

#### 3



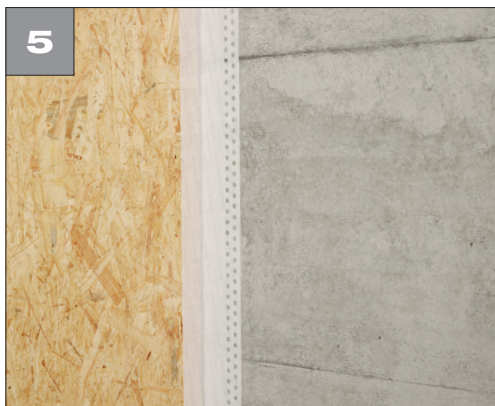
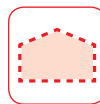
- Unfold Fentrim 20 50/85
- Press on firmly

#### 4



- Remove backing strip
- Fixing
- Apply free from stress and tension
- Press on firmly

## Wall: Solid construction *Airtight on the inside*



### How it should look:

- Timber wall construction joined to non-plastered masonry or concrete



**suitable for  
plastering-over!**

### Note:

- If Fentrim 20 50/85 is mounted on **non-plastered** masonry it must be plastered over to form the airtight layer
- The width of the substrate to be plastered covered by Fentrim must not exceed 60 mm without counting the Fentrim perforated zone.



**suitable for  
plastering-over!**

**Fentrim® 20 50/85**

P. 128