

# 01.6 ANGLED ROOF DRAIN IN IGOM.EE



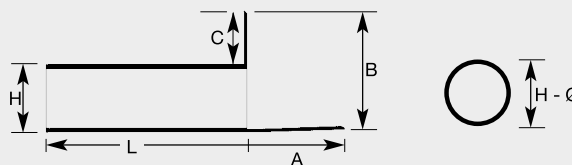
- ^ ART. 304    ^ ART. 310
- ^ ART. 305    ^ ART. 311
- ^ ART. 307    ^ ART. 312

**90° ANGLED ROOF DRAIN IN IGOM.EE WITH ROUND PIPE (Art. 304 - 305 - 307 - 310 - 311 - 312).** It is particularly suitable for use with all kinds of APP, SBS modified bituminous membranes as well as liquid bitumen coatings. This particular item has been studied right down to its smallest details so as to optimize its characteristics thus eliminating problems caused by traditional drains available in the market. The drain is made from IGOM.EE, a specially formulated compound of synthetic rubbers realized by ITALPROFILI® that allow to obtain high physical, chemical and technical properties. IGOM.EE is highly resistant to UV rays, ozone and other atmospheric and chemical agents. It can be used in a wide temperature range and it is stable over time thanks to its physical and mechanical properties, which therefore assure maximum performance throughout its lifespan. The drain consists of a truncated body available in various diameters solidly attached to the perimeter slotted and embossed upper surface flange area all made from the same materials to facilitate adhesion of the membrane. The angled roof drain with a round pipe as a main characteristic offers the possibility of being used for direct discharge from terraces without being connected to down pipes, it can be used with internal or external down pipes but in particular it can be used horizontally on all types of projects where thicker walls are present. It can also be used in conjunction with fittings and curves with secure seal gaskets and for this reason the connections can be made on the inside of walls or very close to the wall.

It can be used in conjunction with the following curves and gaskets:  
- Art. 310 curved fitting Art. 315 - 320 or with other curved fittings that respect UNI EN 1451-1

> INSTALLATION METHOD PAG. 22

ART.	304	305	307	310	311	312
H	63	75	80	100	110	125
A	120	120	120	120	120	120
B	170	170	170	170	170	170
C	114	100	95	75	65	50
L	500	500	500	500	500	500



^ ART. 117

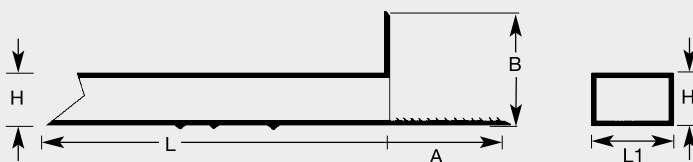


^ ART. 118.5

The **90° ANGLED ROOF DRAIN IN IGOM.EE** is particularly suitable for balconies as direct overflows without downpipes, its large flange allows for an optimal connection with all kinds of APP, SBS modified bituminous membranes as well as liquid bitumen coatings. Made in IGOM.EE. The Art. 118.5 allows for an ample flow and at the same time adds a perfect finish as well as acting as a support for eventual skirting. The fitting can be cut to suit the thickness of each individual pavement.



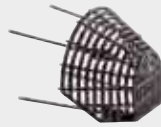
ART.	117	117.1	117.2	117.3
COLOUR	Black	Grey	Ivory	Brown
A	120	120	120	120
B	98	98	98	98
H	40	40	40	40
L	310	310	310	310
L1	50	50	50	50



## 01.6 ANGLED ROOF DRAIN IN IGOM.EE



^ ART. 39



^ ART. 44



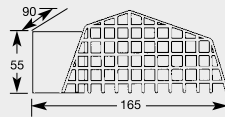
^ ART. 39.2



^ ART. 45



< ART. 44.1



**90° ANGLED ROOF DRAIN WITH SQUARE PIPE (Art. 39 - 39.2), RECTANGULAR (Art. 45) IN IGOM.EE.** It is particularly suitable for use with all kinds of APP, SBS modified bituminous membranes as well as liquid bitumen coatings. This particular item has been studied right down to its smallest details so as to optimize its characteristics thus eliminating problems caused by traditional drains available in the market. The drain is made from IGOM.EE, a specially formulated compound of synthetic rubbers realized by ITALPROFIL® that allow to obtain high physical, chemical and technical properties. IGOM.EE is highly resistant to UV rays, ozone and other atmospheric and chemical agents. It can be used in a wide temperature range and it is stable over time thanks to its physical and mechanical properties, which therefore assure maximum performance throughout its lifespan.

The drain consists of a truncated body available in various shapes solidly attached to the perimeter slotted and embossed upper surface flange area all made from the same materials to facilitate adhesion of the membrane.

The angled roof drain with a round pipe as a main characteristic offers the possibility of being used for direct discharge from terraces without being connected to down pipes, it can be used with internal or external down pipes but in particular it can be used horizontally on all types of projects where thicker walls are present.

It can be used in conjunction with the following curves:

- Art. 39 - 39.2 curved fitting Art. 40 - 41 - 42
- Art. 45 curved fitting Art. 46 - 47

> INSTALLATION METHOD PAG. 23-24

ART.	39	39.2	45
H	100	100	65
L1	100	100	97
A	100	100	120
B	180	180	140
C	80	75	110
L	345	500	500

